

NUMMECH PRODUCTS

UNILOCK HIGH-STRENGTH FEEDNECK

UNILOCK NO-RISE FEEDNECK

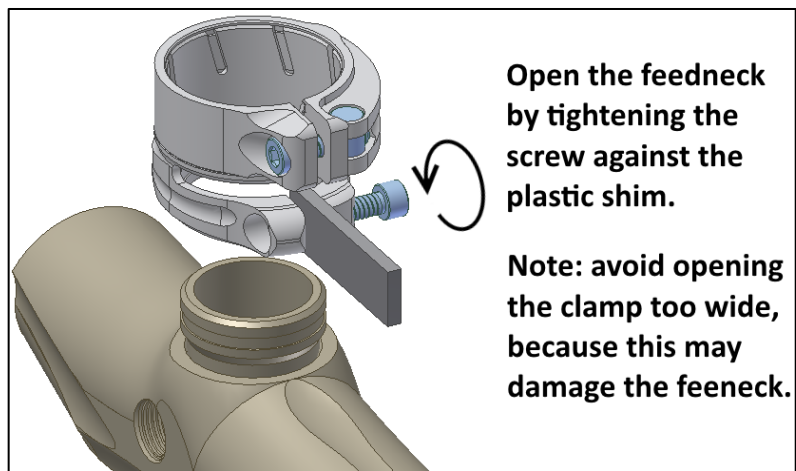
Unilock feednecks are meant to be compatible with many markers using a “boss mount” including:

- Empire mounting spec - used by KEE, Empire, J4, Nummech
- Eclipse mounting spec as of 2007. Unilock feednecks aren't specifically made for Eclipse markers, but they can be used without modification.
- BLAST mount (engraved on the feedneck bottom surface) – compatible with gen-6 G6R and other BLAST markers such as MVP, Insight, VCOM, Onslaught, Phase, etc.
- Threaded-to-Empire feedneck adapters are also available for many marker styles.

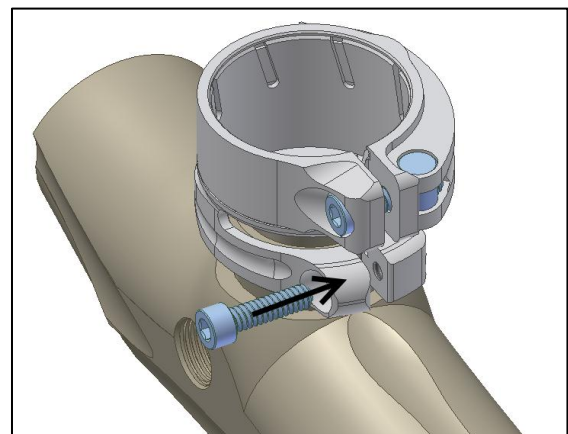
Feedneck installation onto marker body:

1. When shipped from the factory, all new feednecks come with an **installation shim tool**, which is a small piece of plastic that fits within the feedneck's clamping slit. The plastic shim will help to avoid scratching the marker's anodizing finish.

If you lose the shim, you can utilize any similar object to remove or install the feedneck in the future.



2. Slide the “opened” feedneck onto the marker boss mount. Once in position, remove the screw and shim.
3. Flip the body clamping screw around and install in the opposite side of the feedneck body (left side when viewed from behind); see picture: Tighten the body clamping screw hand-tight.



4. As with most paintball marker screws, the clamping feedneck's screw doesn't need to be overtightened. To properly adjust the fit:
 - a) Install your hopper into the feedneck while in the “clamped” position (cam lever in the closed position).
 - b) Tighten the lever knob until the hopper is held securely.
 - c) Open the cam lever, then tighten the knob a little further (generally between a quarter and half turn tighter). Close the cam lever and test the fit.

This setting should be sufficient to hold your hopper during regular use. The fit can be easily adjusted in the future by tweaking the lever knob.